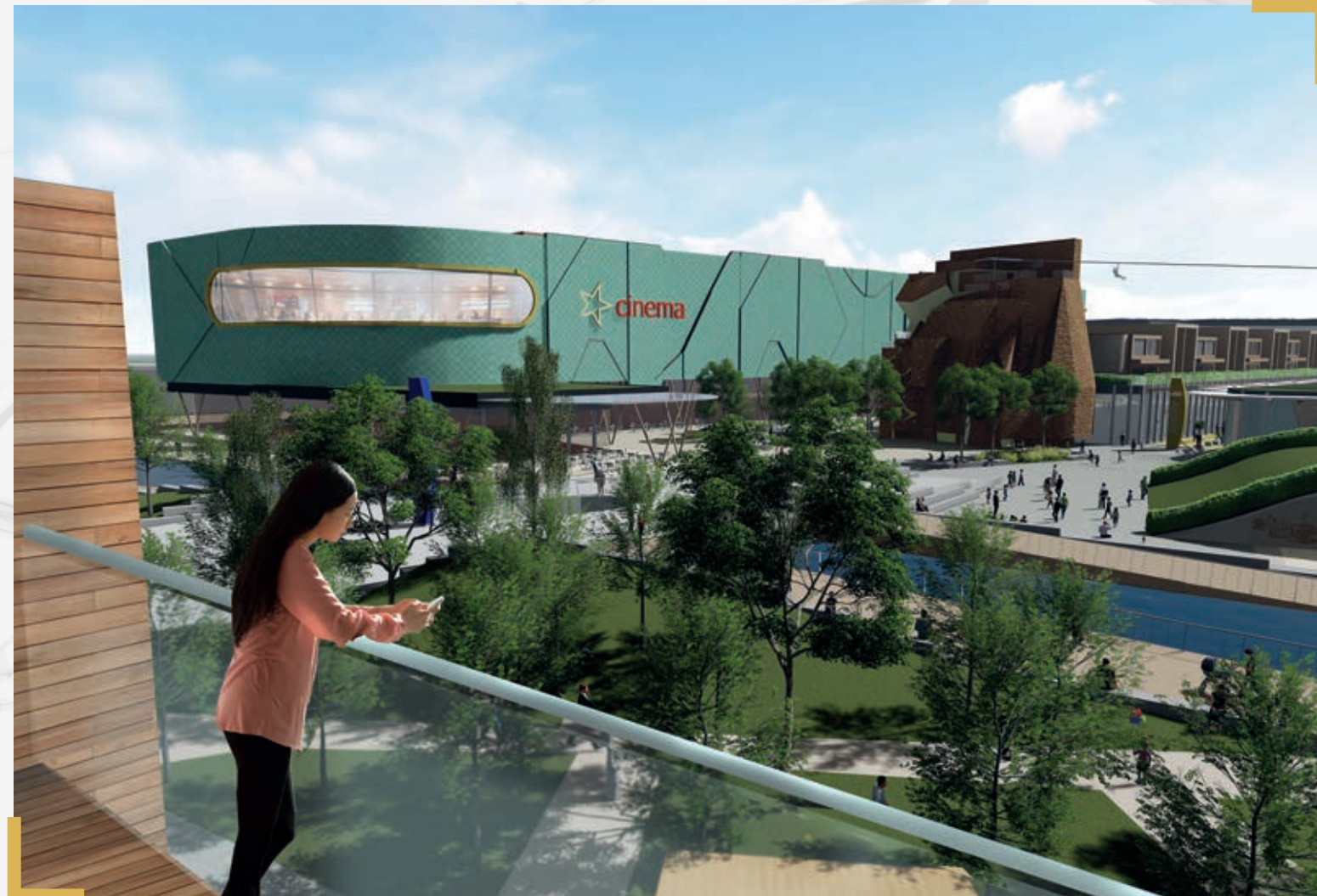


Jacob Palmer Portfolio

Architectural Assistant / Apprentice currently studying
Part 2 and Part 3 at Portsmouth University.

Work Experience Portfolio 2018-Present

Please treat all work as confidential and not to be shared
All projects & images are owned by HPW Architecture unless otherwise stated



Apartment view into new development

Restaurant/waterside visual



Roles | Responsibilities | Skills

Sketchup | Vectorworks | Indesign | Photoshop | Lumion

Early concept designs using Sketchup

Leading a less experienced Part 1 team with achieving the Sketchup model & Visuals

Assisting with graphic presentations for meetings and for the final BID

Working closely with the design team and assisting with design decisions

Town Centre Redevelopment

This proposal was achieved as part of a BID for a new town centre development. The work included masterplanning and concept designs for commercial, residential, retail and leisure facilities. The design team aimed to give the project a strong sustainability agenda while also attempting to push the boundaries of design with curved green roofs that were accessible to the public. Maximising public space was key for this project as well as making a destination for all to enjoy and spend time.



Early concept model



Visual within co-working space

Visual within co-working space



Network, Eagle Lab Southampton

This proposal was for a co-working space in Southampton. The project was finished in 2019 and since has been awarded the 'South Coast Property Award' for 'Workplace Environment'. The design includes workspaces, both formal and informal as well as: booth and pod style seating spaces, meeting rooms, studio, makers-space and welfare facilities.

Roles | Responsibilities | Skills

Sketchup | Vectorworks | Photoshop | Lumion

Developed design model

Independent working and interpreting extensive interior and M & E drawings

Building bespoke furniture/fittings on Sketchup for a more accurate visual

Working to a tight deadline



Angled section cut through Sketchup model



Visual from approach to the bird hide

View from the top of the bird hide



Fishlake Meadows, Bird Hide

This proposal was for the Hampshire and Isle of Wight Wildlife Trust. The project began when I started at HPW Architecture and I had the opportunity to have design freedom. 2 years later, the project matured and extended to the World of Water site in Romsey. This project, which includes the bird hide is currently in for planning permission. The brief for the project was minimal and mostly outlined access and visibility for people with disabilities. The curved and visually random timber structure stands as a 'nest' for the local public and 'twitchers' to visit and view the beautiful reserve.



View from behind the hide towards the World of Water site

Roles | Responsibilities | Skills

Sketchup | Vectorworks | Photoshop | Lumion

Developed the concept and final design model

Independent working and having the majority of the design input

Developed sketch visuals using Lumion

Working to a minimal brief and exploring different design options quickly and efficiently



Aerial visual of the World of Water development

View from the approach from the car park



World of Water, Romsey

This proposal was for the Wildlife Trust as well as a private developer/investor. The scheme comprises of: a visitor centre, offices, retail, cafe & Mixed use spaces (as well as a bird hide). The small HPW team executed this planning application in a very short amount of time during the Covid-19 lockdown early 2020. The proposal boasts a highly sustainable agenda with renewable power, green roofs, green walls and use of local timber.

Roles | Responsibilities | Skills

Sketchup | Vectorworks | Indesign | Photoshop | Lumion

Developed the concept, the final design model & Visuals

Independent working and having design input throughout the pre-app and planning process (within a very small design team)

Developed visuals using Lumion

Working to a tight deadline

Explored different design options quickly and efficiently

Working closely with consultants, the client and other professionals



Aerial sunset view of the World of Water development



Roles | Responsibilities | Skills

Sketchup | Vectorworks | Indesign | Photoshop | Lumion

Current design project at university

Independent working and modeling and visualising the project using Lumion

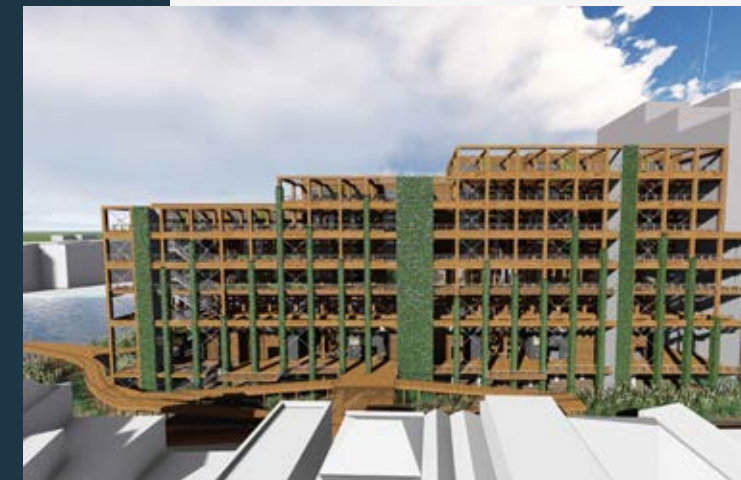
Researching and understanding flooding in Portsmouth while also investigating innovative technologies including plasma jet tech for use in hydrogen dissociation

All images are author's own



Current University Project

This proposal is for a residential development in Portsmouth. I have designed this project to be future proof against sea level rise. The building integrates plasma jets to destroy flood water and produce hydrogen gas for use in the homes or for electricity production and battery storage. The building is a combination of glulam frame and SIP panels. The scheme is intended to be almost entirely constructed off site and assembled quickly. The ground level has been designed as a wetland to create biodiversity within Portsmouth.



06

HPW Integrations | UCR Group



Aerial view of the facility

Visual towards facility near car charging points



Roles | Responsibilities | Skills

Sketchup | Vectorworks | Indesign | Photoshop | Lumion

- Developed the concept, the final design model & Visuals within a day
- Independent working and having sole design input
- Developed visuals using Lumion
- Managing my time and efforts to ensure the work was completed and to the client's brief
- Explored different design options quickly and efficiently
- Working closely with UCR Group representative to ensure viability of the project as well as ensuring his vision and goals were met

Zero emission Energy From Waste Facility

This concept design was presented to a local council to promote new technologies championed by UCR Group, a sister company to HPW Architecture & HPW Integrations. The facility would house UCR's technology, delivery entrance, energy storage facility as well as charging points for electric cars. The timber would be Evenwood, a UCR developed timber that has been heat treated in a vacuum kiln removing moisture and resin making it mold/rot proof. The project was designed using the golden ratio which dictated the massing and location of the glazing.



Side view of the facility



Interior visual showing the modern fit-out

Visual of the southern elevation



Off Grid Housing Development

This concept design was presented to a local council to promote new technologies championed by UCR Group, a sister company to HPW Architecture & HPW Integrations. The development would house UCR's technology, making the development off grid. The timber would be Evenwood, a UCR developed timber that has been heat treated in a vacuum kiln removing moisture and resin making it mold/rot proof. The project was designed to be vernacular to its location while also being scale-able to create different modular units housing families of different sizes.



Perspective view of the southern elevation

Roles | Responsibilities | Skills

Sketchup | Vectorworks | Indesign | Photoshop | Lumion

- Developed the concept, the final design model & Visuals
- Independent working and having sole design input
- Developed visuals using Lumion
- Managing my time and efforts to ensure the work was completed and to the client's brief
- Explored different design options quickly and efficiently
- Working closely with UCR Group representative to ensure viability of the project as well as ensuring his vision and goals were met



Visual of the South elevation



Visual of the East elevation

Private House

This concept design was designed in collaboration with the client to provide him with a house on his holiday park. The scheme has been designed to have an agricultural aesthetic with sharp detailing and modern lines. The client is incredibly happy with the design of his house and we are soon to submit to planning.

Roles | Responsibilities | Skills

Worked closely with the client on the design

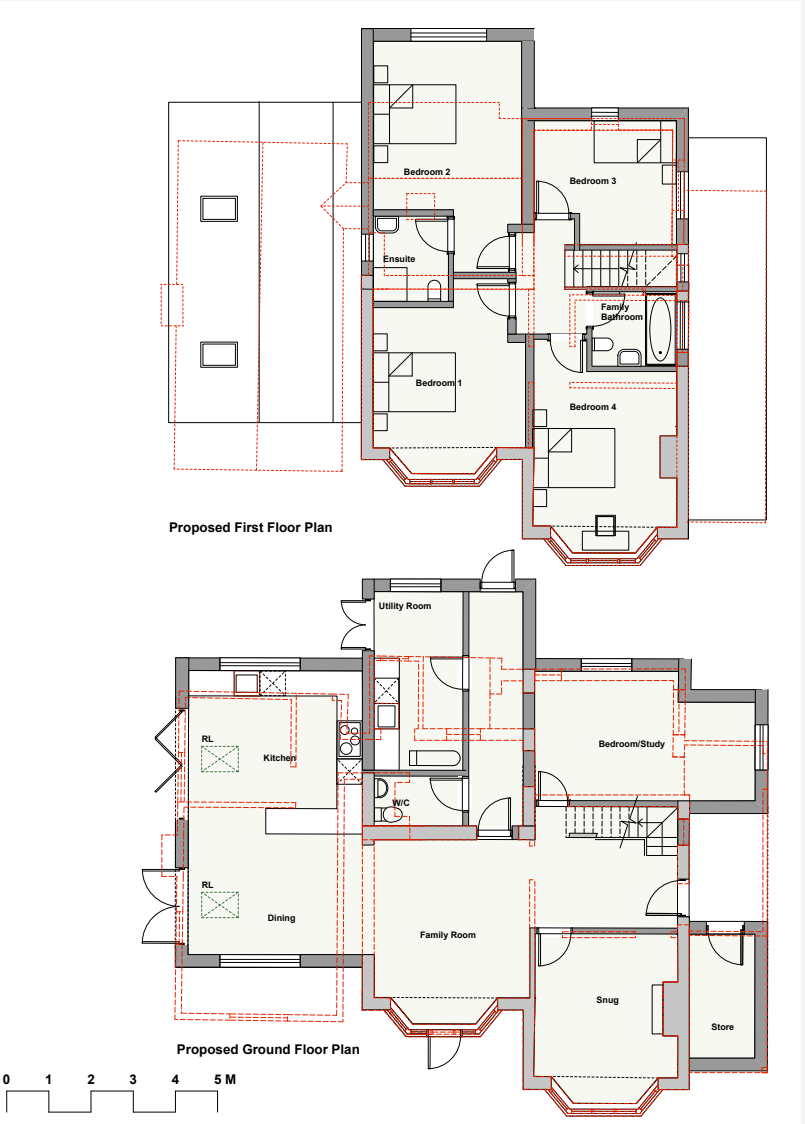
Independent working and having design input with minimal input from senior architect

Managing my time and efforts to ensure the work was completed and to the client's brief

Explored different design options quickly and efficiently

Worked with the planning consultant in order to submit the planning application on time





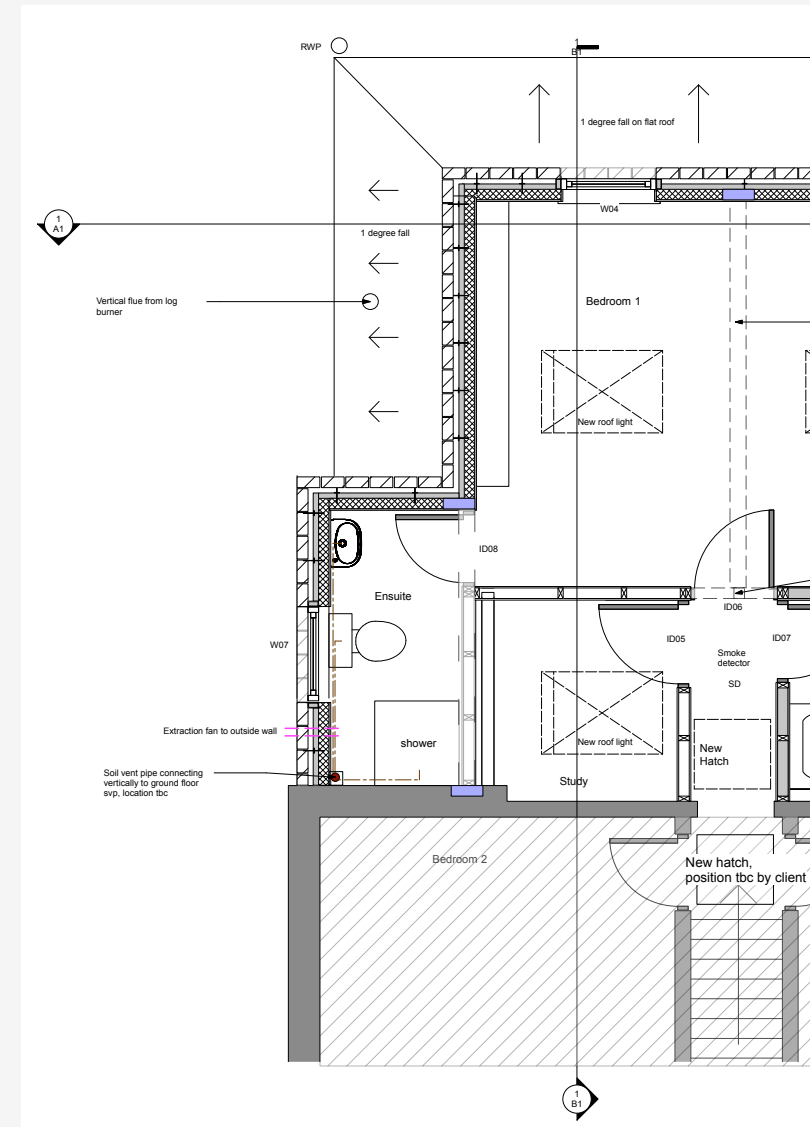
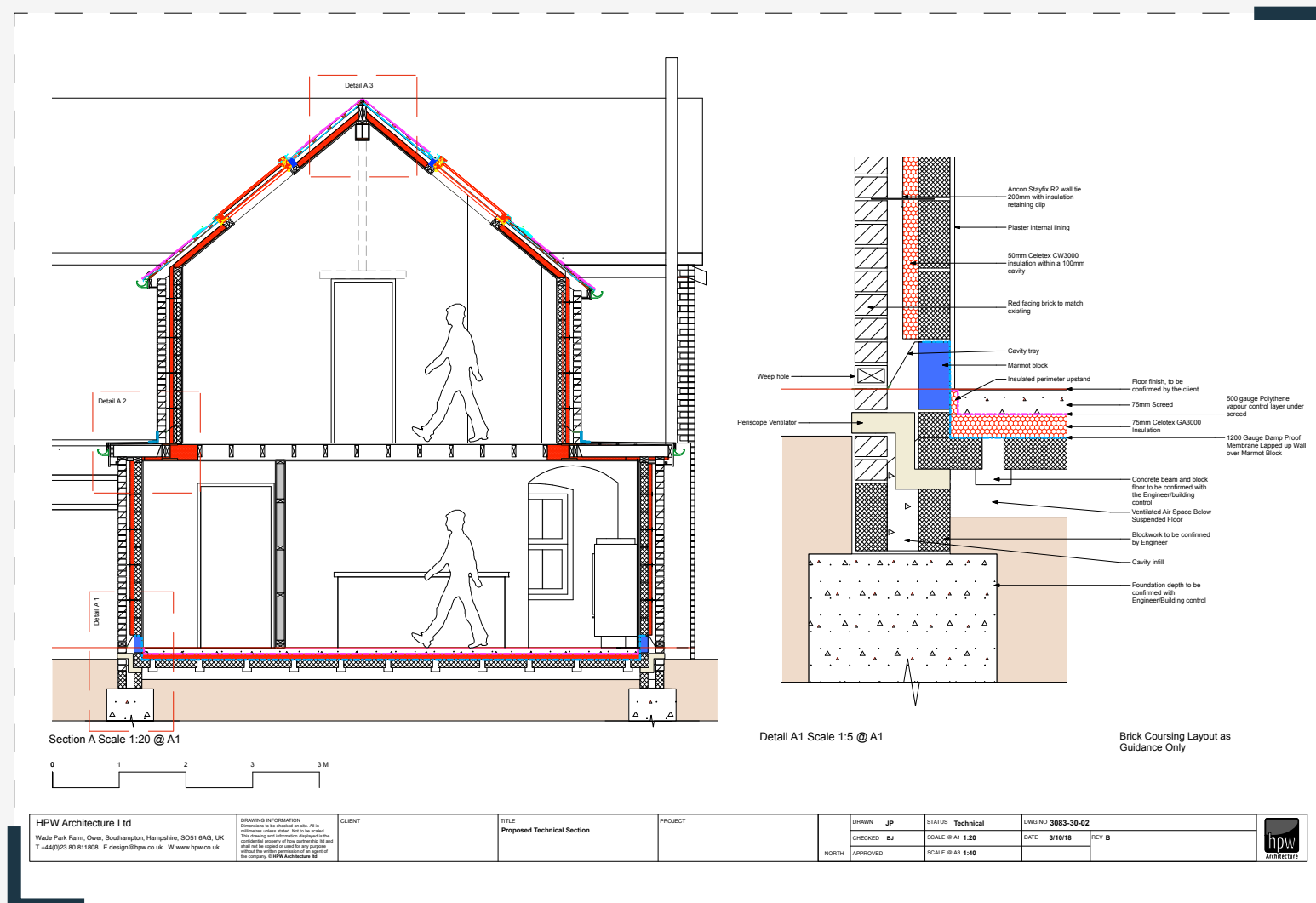
Farmhouse Extension

House extension for a deteriorated farmhouse for a repeat client. The client intended to make the house suitable for a modern family. The council had previously refused a development on this site and so the work was contentious. The design has since received planning permission and is currently under construction. A lot of communication and collaboration was required with the planning officer to establish what was acceptable. Local materials were used where appropriate and the aesthetic was designed to reflect the original farmhouse.

Roles | Responsibilities | Skills

Vectorworks | Planning Application

- Closely collaborated with the client and local council on the design
- Independent working and having design input
- Managing my time and efforts to ensure the work was completed and to the client's brief
- Explored different design options quickly and efficiently
- After planning permission was received I lifted the conditions from the permission
- I worked closely with the builder to ensure the approved materials and the layout were as approved



House Extension

House extension for a new client who aimed to gain a new master bedroom with en-suite as well as improving the ground floor living areas. The planners saw the extension as moderately contentious and therefore the extension design had a few iterations. I designed the extension with the client's input and brief and it gained planning permission in 2018. I detailed the project with supervision from the practice architect and handed the project over to the builder and client.

Roles | Responsibilities | Skills

Vectorworks | Planning Application

Closely collaborated with the client and local council on the design

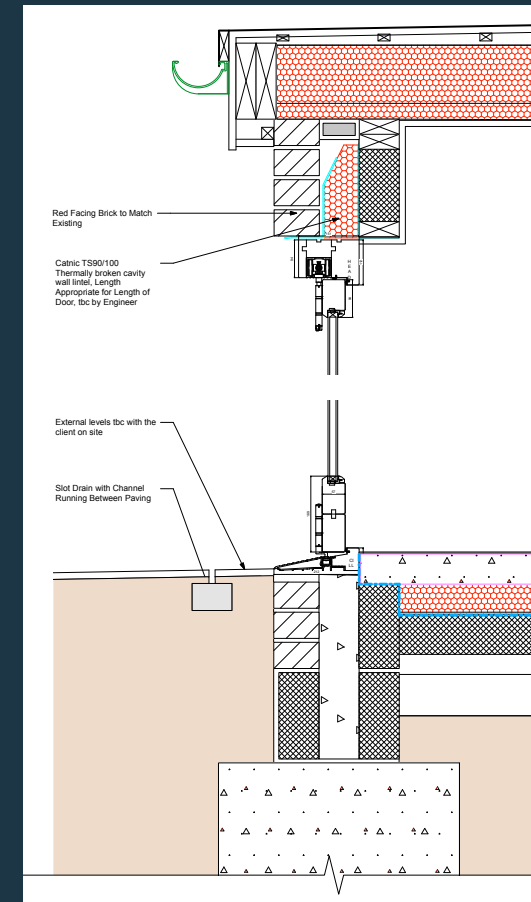
Independent working and having design input

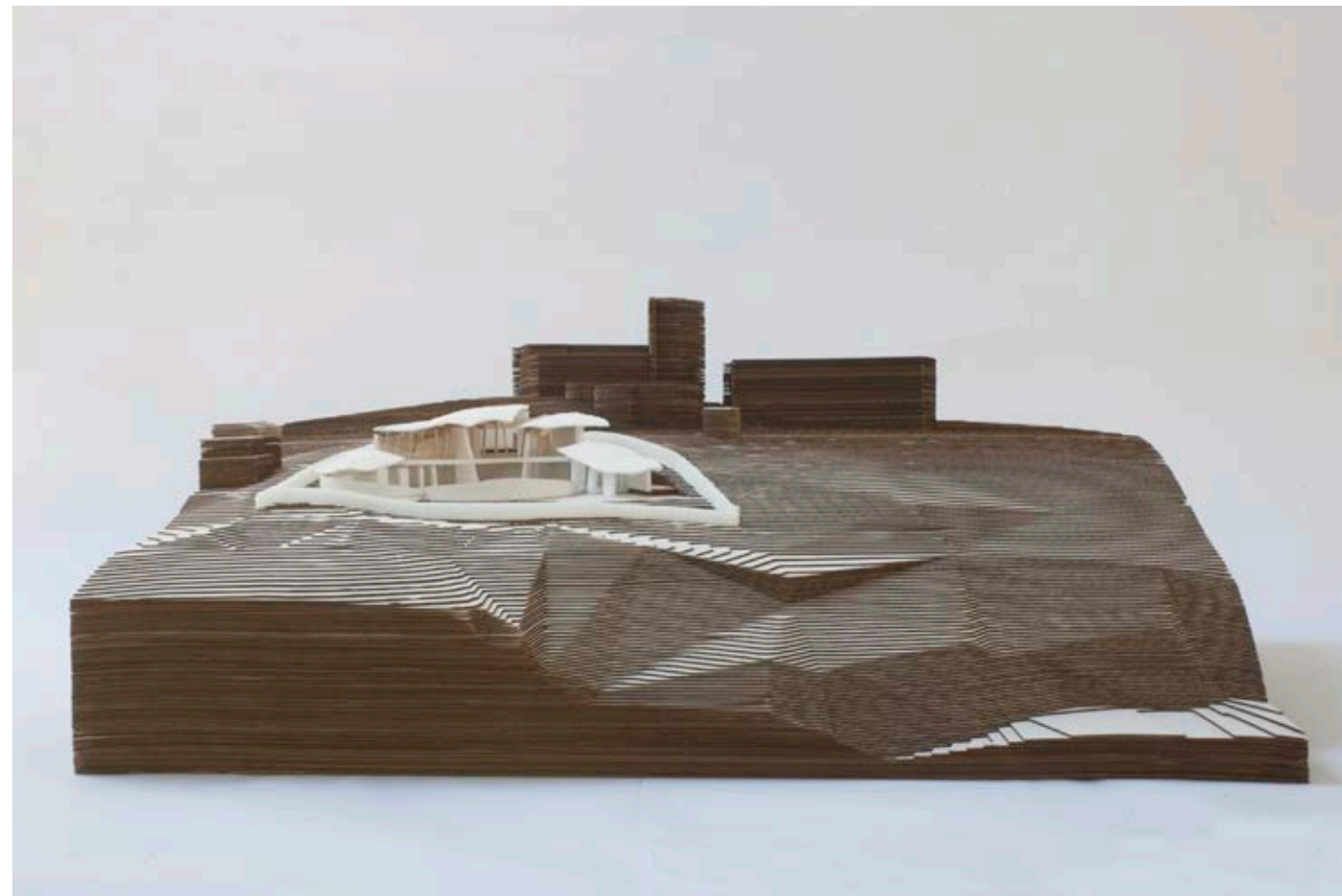
Managing my time and efforts to ensure the work was completed and to the client's brief

Explored different design options quickly and efficiently

After planning permission working on the building regs package

I worked closely with the client through RIBA stages 2-5

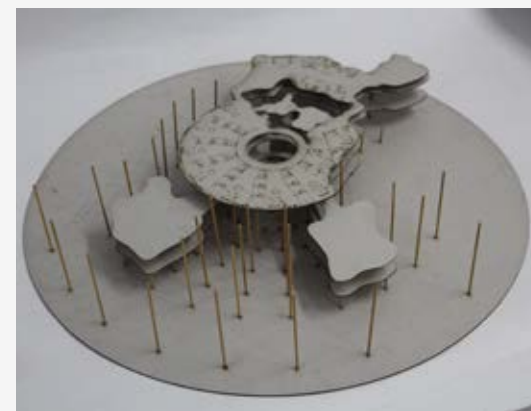




Images owned by Arco2 Architects

Model making

The model to the left was made during my time at Arco2 in Cornwall. I was entrusted with the responsibility for this model including: Costing the materials, predicting the time spent (for the fee proposal), creating the sketchup model, organising and collaborating with a laser cutting business as well assembling the model. The site (indicated with white foam representing Cornish hedges) can be lifted out of the model using the ribbon tabs. The models to the right are exploratory models I made during undergraduate studies.



Roles | Responsibilities | Skills

Model making

- Independent working and organising my time and priorities
- Cost estimates for the materials and time spent
- Liaising with a laser cutting business to organise time scales and cost
- Using the laser cutter safely and efficiently
- Assembling the model and making the modroc roof forms by hand

CONTACT

up951873@myport.ac.uk

jacobpalmer95@hotmail.com

Undergraduate portfolio can be found at:

<https://1400625.wixsite.com/jacobpalmer/work-experience>